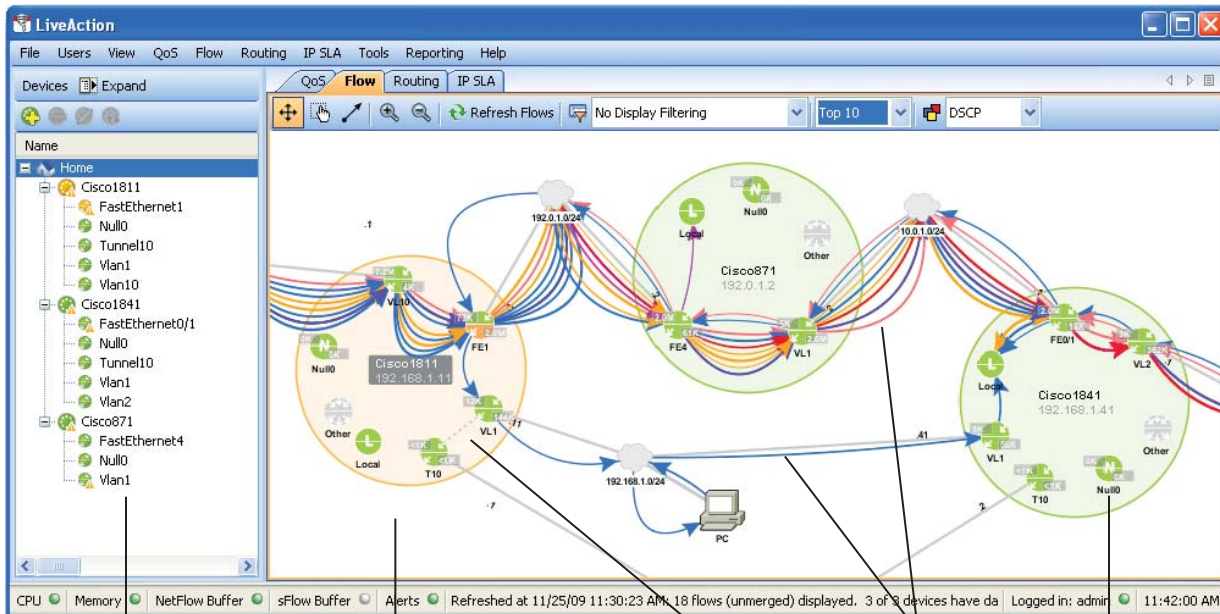


LiveAction™ Flow

Advanced Network Flow Visualizations and Monitoring



Hierarchical View

Left side of screen shows devices and interfaces in a hierarchical view.

Real Time Network Topology

Right side of screen shows devices (large circles), interfaces (small colored circles), interconnections, flows, interface bandwidth, congestion, and more.

Devices

Large circles indicate devices (routers and switches). Small circles indicate interfaces.

Flows

Curved lines indicate traffic flows. Click to trace from source to destination.

Interfaces

Top half indicates input. Lower half indicates output. Numbers indicate bandwidth.

LiveAction Flow is a software module that provides advanced system level flow visualization as well as detailed internal router and interface views and graphs. The software enables IT engineers to quickly set up and view flow information on their networks. LiveAction Flow supports Cisco NetFlow, Juniper Networks J-Flow, and InMon sFlow.

Why LiveAction Flow?

LiveAction Flow starts with a network topology view that provides a crystal clear view of live traffic activity across the network. From this topology view, users can quickly drill down to individual devices or interfaces for more detail. This unique approach makes it easy to find troublesome spots on the network and allows users to switch effortlessly to other LiveAction modules such as LiveAction QoS, Routing, and IP SLA.

Because the volume of flow data can be overwhelming, LiveAction provides numerous filtering options to tailor the information presented on the screen. LiveAction is one of the few applications that supports Cisco MIB polling to ensure real-time data viewing.

In addition to live views, LiveAction also captures historical flow data on a continuous basis so you can recreate detailed traffic flow conditions for any date and time you specify.

Key Features and Benefits

- Ease of use—LiveAction's intuitive graphical interface replaces complicated command lines to make on-the-fly monitoring fast, easy and understandable.
- Built-In flow expertise—Built in device expertise is based on our extensive knowledge of network devices and flows.
- Intuitive topology views—Literally "see" your flows across the network from source to destination.
- Faster troubleshooting—In the topology view, spot congested devices and interfaces instantly by their amber color. Double-clicking on these elements provides more detailed information with multiple viewing options.
- Summarize relevant information with advanced filtering and HTML reports.
- Observe the effects of routing changes on network traffic and flows in real time.
- Improve operator efficiency through advanced visualization of real-time encrypted traffic at the system, network, router, enclave, COI, and application-class levels.
- Enhance security by using real-time monitoring to identify unauthorized traffic and denial of service (DoS) attacks. Right-click on a flow to create an ACL instantly.
- Replay captured NetFlow data from any previous date and time to view activity and problems exactly as they occurred.

Features and Specifications

Features

- Topology-based, end-to-end flow view
- Aggregate flow or individual flow views
- Display end points as host IP address, host name, application port name or number
- Filter top N or bottom N flows in topology and device views
- X-Ray view of flows inside router
- Sophisticated filtering for matching combinations of protocol type, IP addresses, DSCP values and more
- Built-in reports for top talkers, address dissemination, and aggregation
- Works in MIB and Collector modes
- Sortable flow table
- Start, stop and pause flow data
- Adjustable flow polling rates
- Flow graph—by port, by source or destination address
- Built in DNS name resolution
- Historical data capture at full data rate with instant playback
- NetFlow, J-Flow and sFlow support

Benefits

- Faster troubleshooting of the network
- View flows across the network
- Pinpoint entry and exit of flows
- Acquire understanding of flow paths
- Tag and observe blacklisted traffic
- Perform forensic traffic analysis
- Observe routing and other router changes and effects

Devices Supported

- Cisco Series Routers*—800, 1700, 1800, 2600, 2600XM, 2800, 3600, 3700, 3800, 7200, 7600
- Cisco Series Switches*—Catalyst 6500, 4500, and 3000 series switches.
- J-Flow and sFlow devices

*IOS 12.3, 12.4; IOS 12.2 for 7600 and Cat 6500 series

LiveAction Technology Module Options with Flow

- Flow module
- Monitor Suite: QoS (monitor only), Flow, Routing
- Master Suite: QoS, Flow, Routing, IP SLA

System Requirements

- Windows-based PC with network connection (visit our web site for current system requirements)

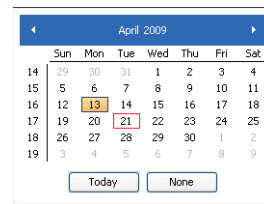
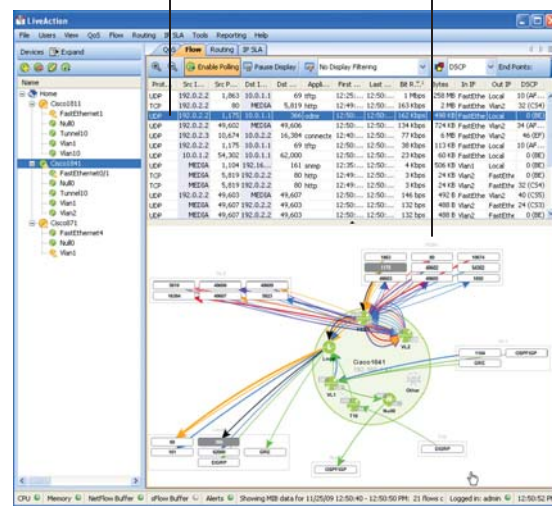
Warranty and Support

- 90 day warranty and support including free upgrades
- Online technical support
- Annual software maintenance plans available

Device Level Flow Views

Device view shows flows through each interface. Flows can be grouped by IP address, port, or port application.

Detailed flow data appears in tabular format on top half of screen. Data can be displayed by IP address, port, or port application.

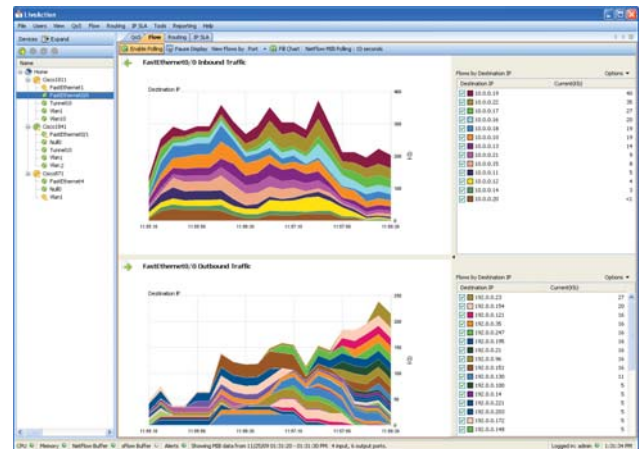


Historical Device Level View

Flow data is captured at 10 second intervals on a daily basis so you can recreate detailed flow conditions for any date and time you specify.

Interface Level Flow Views

See detailed views of flows for individual interfaces. Flows are charted on a timeline and can be displayed based on port, DSCP, and inbound or outbound IP addresses.



LiveAction software is available from Referentia Systems, Inc.
 550 Paiea Street, Suite 236, Honolulu , HI 96819
 +1 808 423-1900
 www.referentia.com info@actionpacked.com

© 2010 Referentia Systems Incorporated. All rights reserved.
 Referentia and the Referentia logo are trademarks of Referentia Systems Incorporated. LiveAction is a trademark of ActionPacked! Networks.
 Cisco is a registered trademark of Cisco Systems, Inc. Juniper Networks is a registered trademark of Juniper Networks, Inc. sFlow is a registered trademark of InMon Corp. Information subject to change without notice.
 ActionPacked! Networks is a spin off of Referentia Systems, Inc.